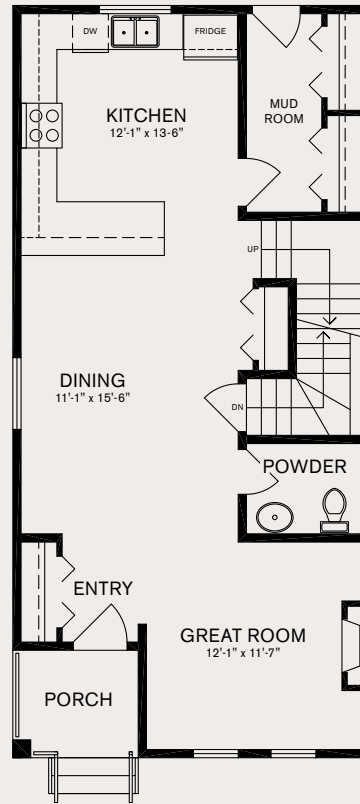
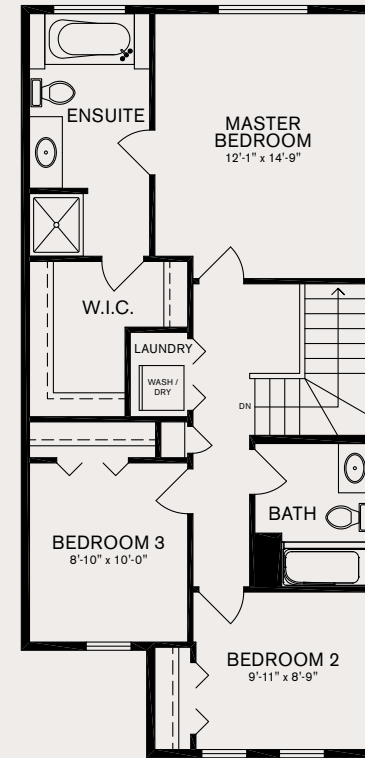


BASEMENT 798 SQ FT



MAIN 798 SQ FT



UPPER 758 SQ FT

THE STAFFORD 1

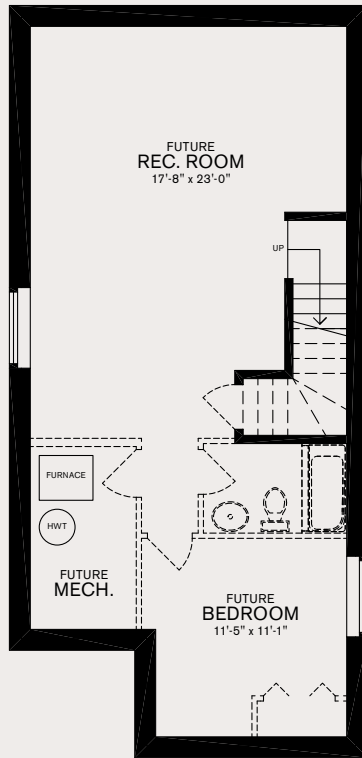
3 BEDROOM | 3 BATHROOM **1,556 SQ FT** BASEMENT 798 SQ FT

The developer reserves the absolute right to modify, cancel or extend this offer at any time without prior notice. Actual interiors, exteriors and views may be noticeably different than what is depicted in photographs. This is not an offering for sale. Any such offering may only be made with the applicable offer to purchase and agreement of sale and disclosure statement. Prices and availability are subject to change without notice. E. & O.E.

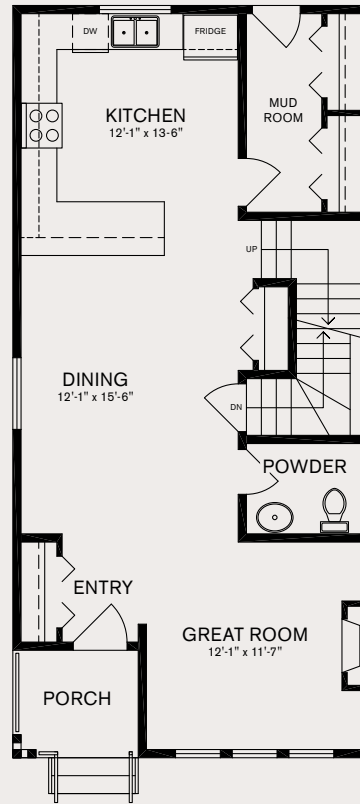


PANORAMA

AT SOUTHPOINT



BASEMENT 798 SQ FT



MAIN 798 SQ FT



UPPER 758 SQ FT

THE STAFFORD 2

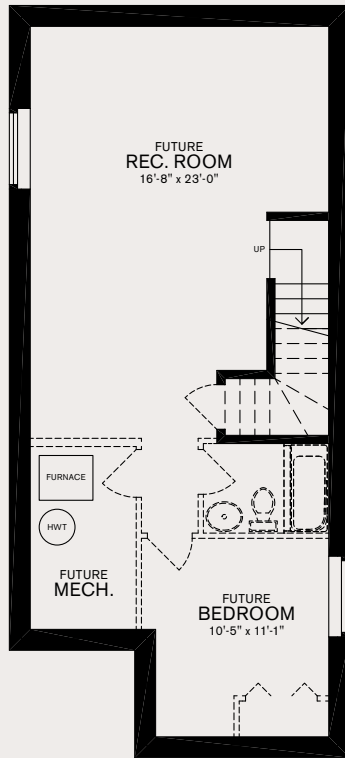
3 BEDROOM | 3 BATHROOM **1,556 SQ FT** BASEMENT 798 SQ FT

The developer reserves the absolute right to modify, cancel or extend this offer at any time without prior notice. Actual interiors, exteriors and views may be noticeably different than what is depicted in photographs. This is not an offering for sale. Any such offering may only be made with the applicable offer to purchase and agreement of sale and disclosure statement. Prices and availability are subject to change without notice. E. & O.E.

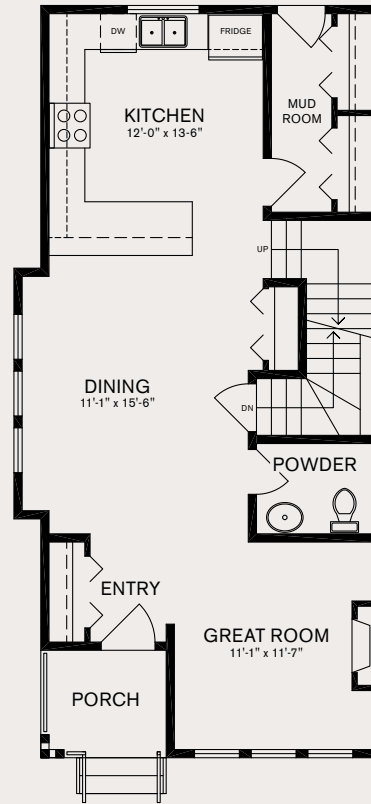


PANORAMA

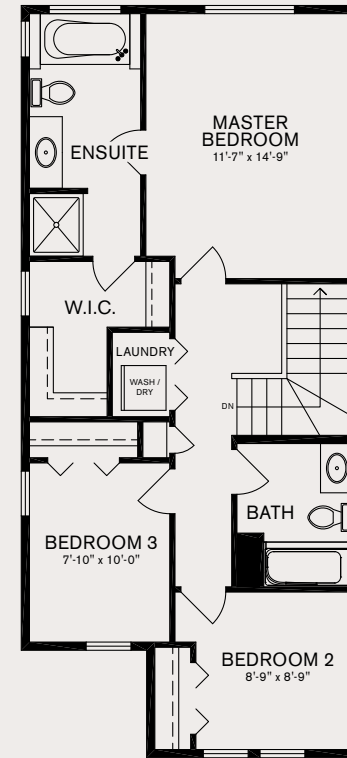
AT SOUTHPOINT



BASEMENT 756 SQ FT



MAIN 777 SQ FT



UPPER 716 SQ FT

THE STAFFORD 2 CORNER

3 BEDROOM | 3 BATHROOM **1,493 SQ FT** BASEMENT 756 SQ FT

The developer reserves the absolute right to modify, cancel or extend this offer at any time without prior notice. Actual interiors, exteriors and views may be noticeably different than what is depicted in photographs. This is not an offering for sale. Any such offering may only be made with the applicable offer to purchase and agreement of sale and disclosure statement. Prices and availability are subject to change without notice. E. & O.E.



PANORAMA

AT SOUTHPOINT